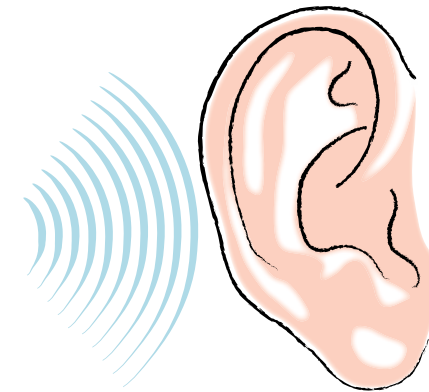




It takes about 5 - 10 minutes to take a cast of your ear. Your ear may feel slightly greasy afterwards.

Having an impression taken for an ear mould in the Audiology Clinic



Audiology Department
North Devon District Hospital
Raleigh Park, Barnstaple
Devon EX31 4JB
Tel: 01271 322476
www.northdevonhealth.nhs.uk/audiology

What do I have to do?



The Audiologist will greet you and take you into one of the test rooms.



Someone will look in your ears first to check they are clear.



The Audiologist will then put a soft piece of foam in your ear. This may tickle your ears.



The Audiologist will then put some soft paste into your ear that will set and take the shape of your ear.

Your ear will feel blocked and you won't be able to hear very well while this is being done.

You will need to sit quiet and still.



Once the paste has gone hard, the Audiologist will remove it from your ear.



The mould will be sent to the manufacturers to be made into an ear mould.